

ShieldAll Return Guard



Read and understand equipment operators manual before operating or performing maintenance. Failure to do so could result in serious injury or death.

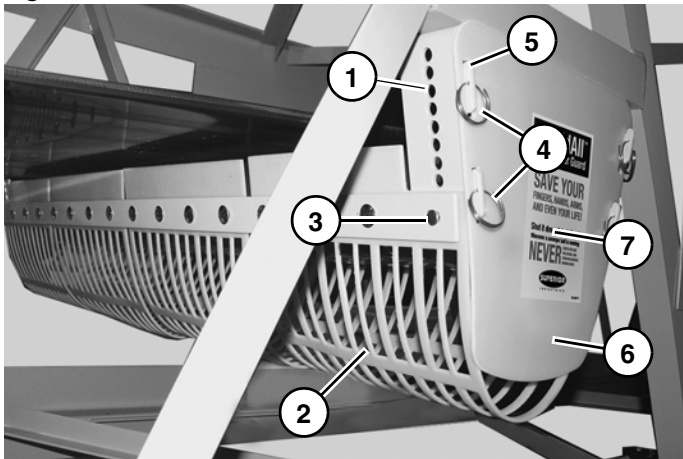
⚠ WARNING

Heed to the following warnings. Failure to do so could result in death or serious injury.

- Lockout/Tagout/Blockout before performing maintenance or installation.
- Guards must always cover return idlers 8' (2.4m) in height and lower.
- Do not operate equipment without guards in place.

Overview

Figure 1

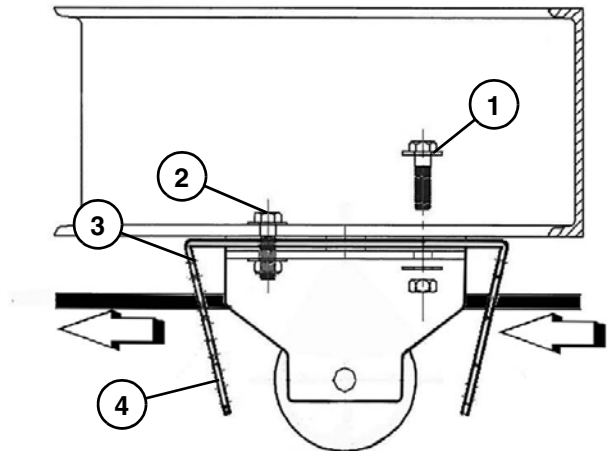


1. Guard Bracket
2. Guard
3. Adjustable Clevis
4. Circle Cotter
5. Tabs
6. End Cover
7. Safety Decal

Installation

Mounting brackets are designed to use same bolts that hold idler mounting brackets in place without dropping idlers.

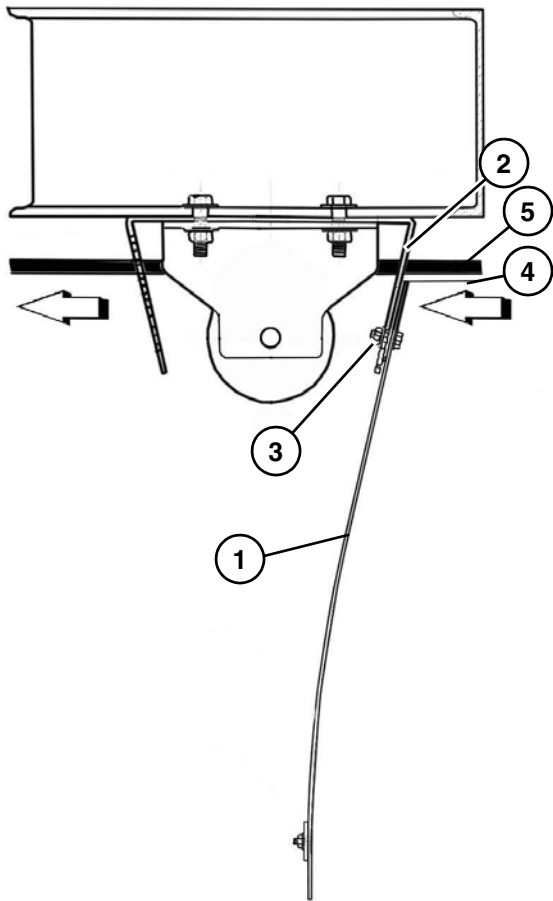
Figure 2



1. Remove up hill bolt (1) (Figure 2).
2. Loosen down hill bolt (2) (Figure 2).
3. Insert bracket. (3) Side with multiple adjustment holes (4), faces direction of belt travel. (Figure 2)
4. Reinsert up hill bolt and tighten all bolts.
5. Repeat steps 1-4 for opposite side bracket.

Note: Brackets are slotted on one side. They can slide over top of idler bracket with down hill bolt still in place. Make sure four tabs on mounting bracket are facing away from conveyor belt.

Figure 3

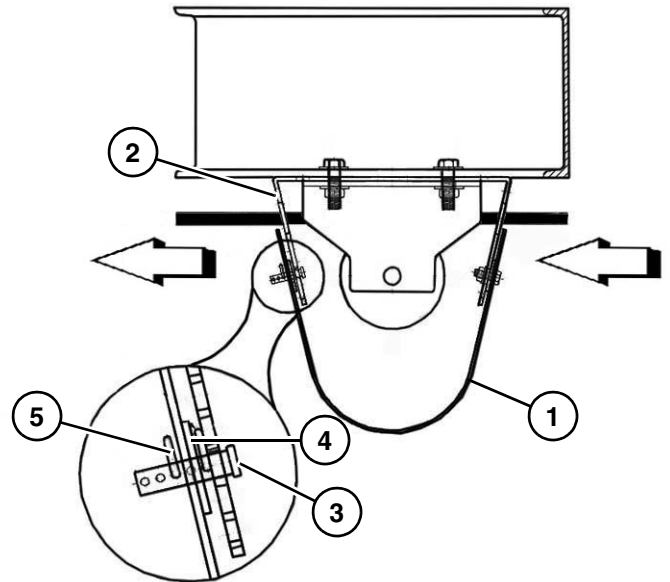


6. Attach guard (1) to brackets (2) using two 3/8-16 x 1" bolts, nuts and washers (3). (Figure 3)

Note: Mount assembly allowing no more than 1" (25 mm) between top of guard (4) and conveyor belt (5). (Figure 3)

7. Do not tighten bolts.

Figure 4



8. Bring guard (1) around to other side of bracket (2). (Figure 4) Hold guard so that top edge is approximately 1" (25 mm) from conveyor belt.

9. Line up holes on guard with adjustment holes on bracket.

10. Determine placement and, insert adjustable clevis (4) (Figure 4) in bracket from inside out.

11. Insert first hairpin clip (5) through first clevis hole closest to bracket. (Figure 4)

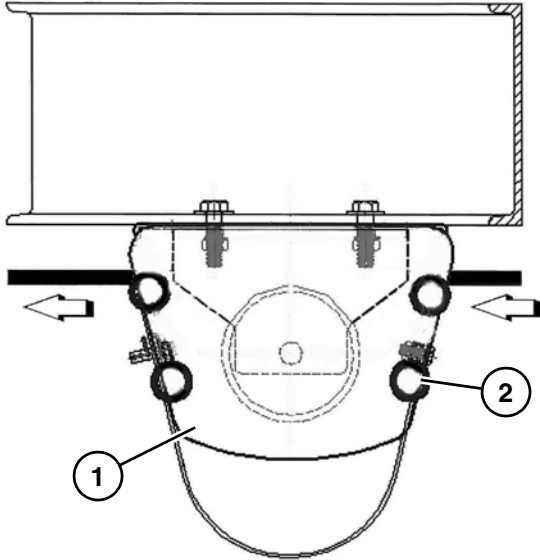
Note: This will keep clevis in place when future maintenance is done.

12. Bring guard back into place over clevis (4) and insert second hairpin (6). (9.)

Note: Pin should be third hole from end of clevis.

13. Repeat step 8-11 on opposite side of guard assembly.

Figure 5



Maintenance

Every 100 Hours

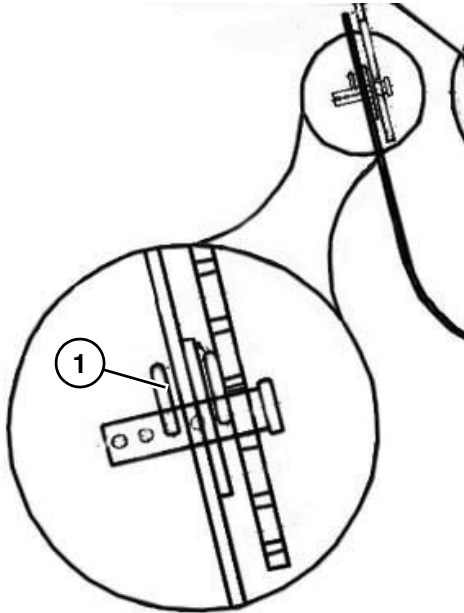
- Inspected guards for material build-up that would hinder return roller performance.
- Check for damage to guard. Replace any broken or missing pieces
- Check safety decal for wear or damage, replace if needed.

14. Slide end covers (1) (*Figure 5*) over tabs that are on brackets and push down. End cover will slide down behind the tabs.

15. Place circle cotters (2) (*Figure 5*) through holes on each tab.

Removing Material

Figure 6



1. Remove hairpin clip (1) (9.) from clevis.
2. Flip guard down and remove material.
3. Replace guard and hairpin clip in clevis.